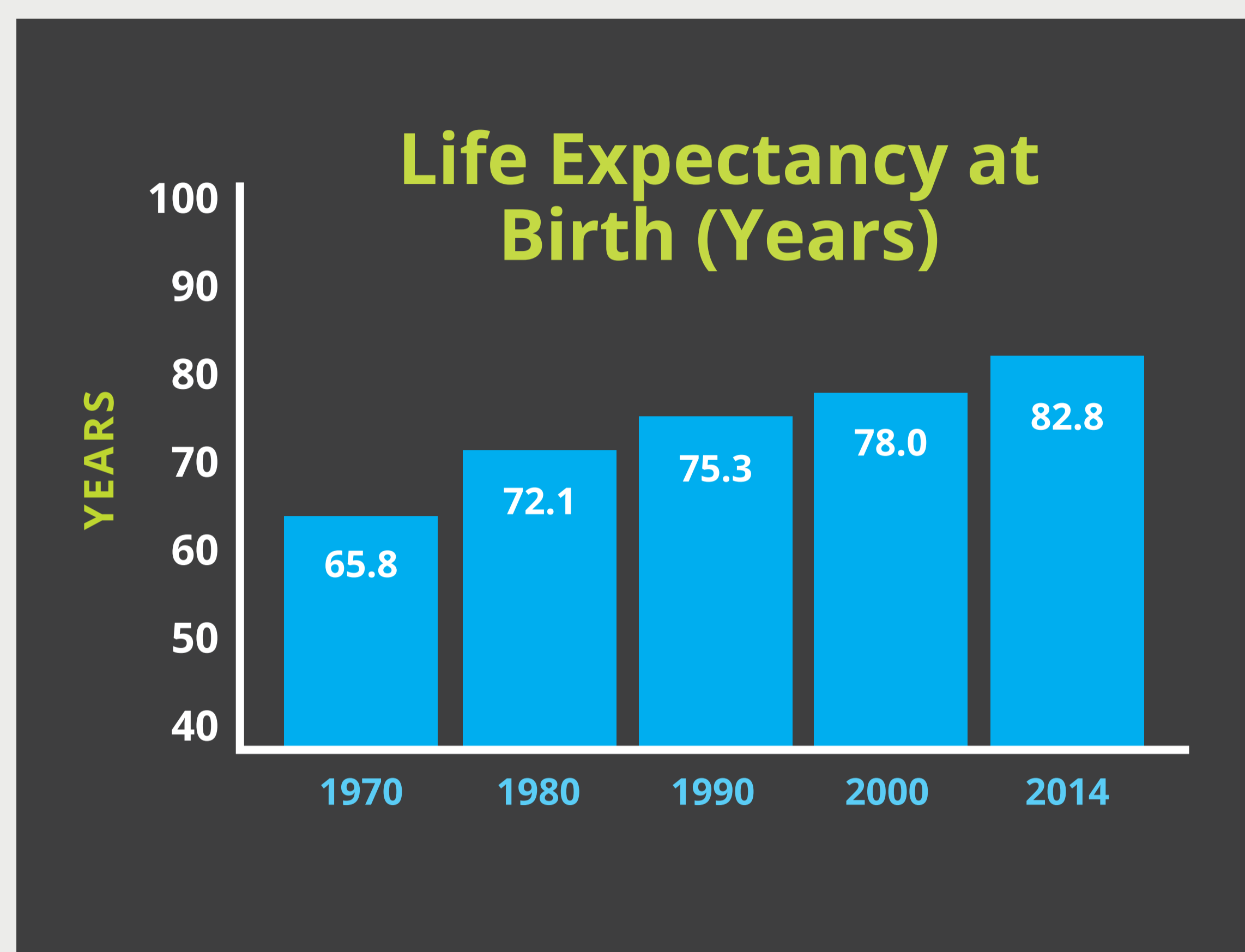


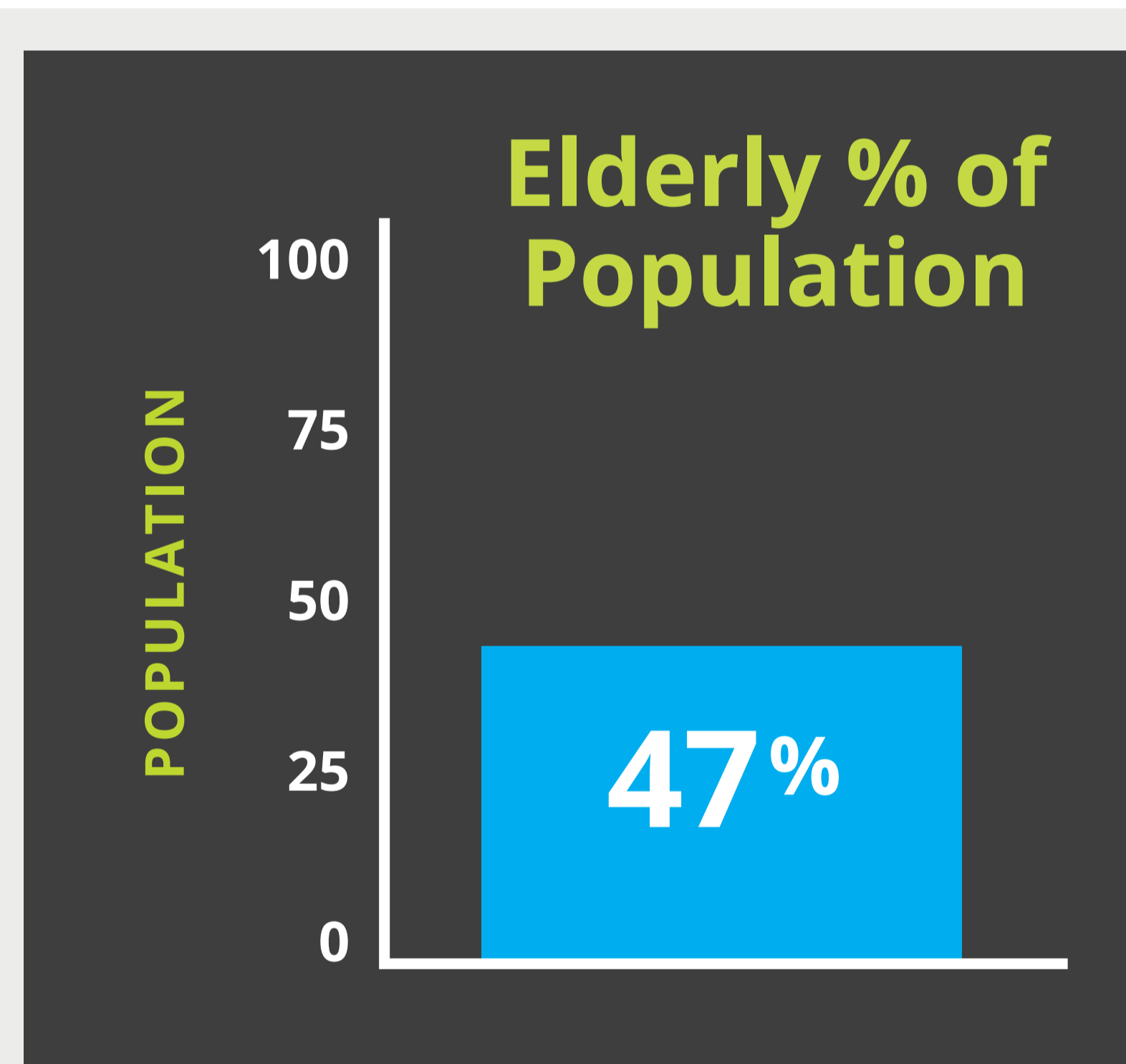
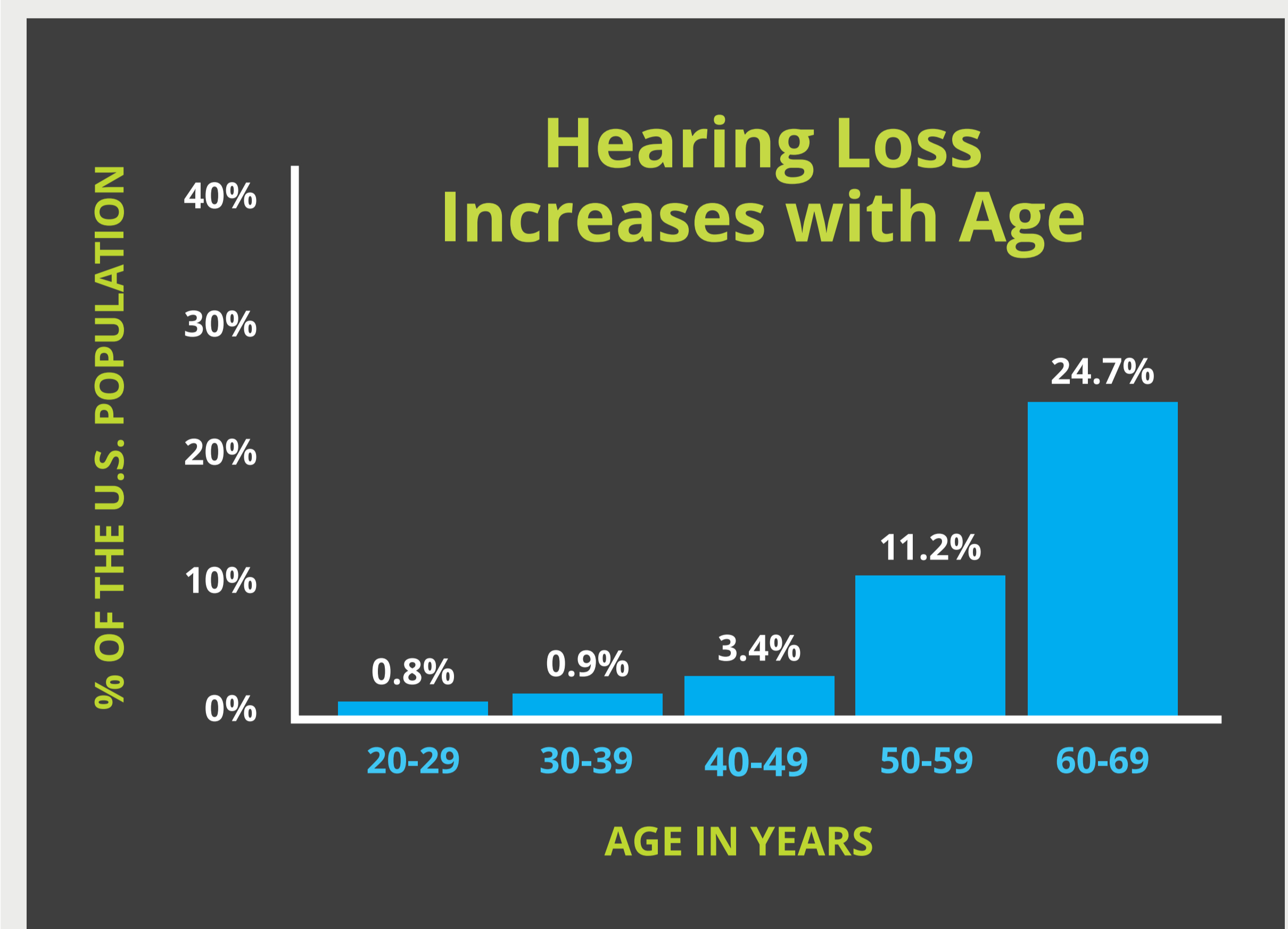
## Hearing Loss in Singapore

An estimated 422,000 adults in Singapore suffer from hearing loss. With an increasing life expectancy, these numbers will more than double by 2050.

### Singaporeans are living longer



### Hearing deteriorates with age



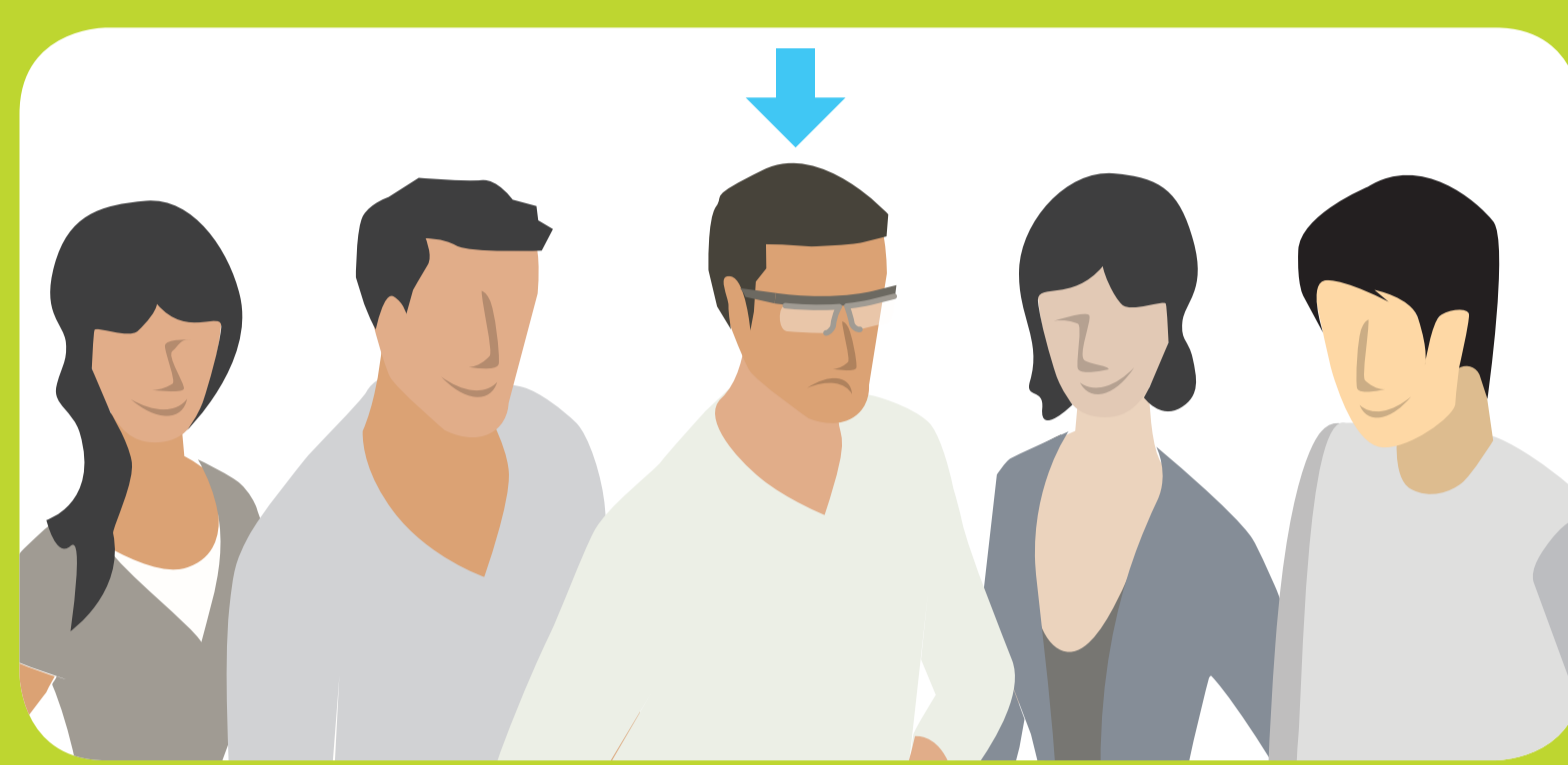
By 2050 almost half of Singapore's population will be elderly

\*Source: <http://www.annals.edu.sg/cpdmay05.html>

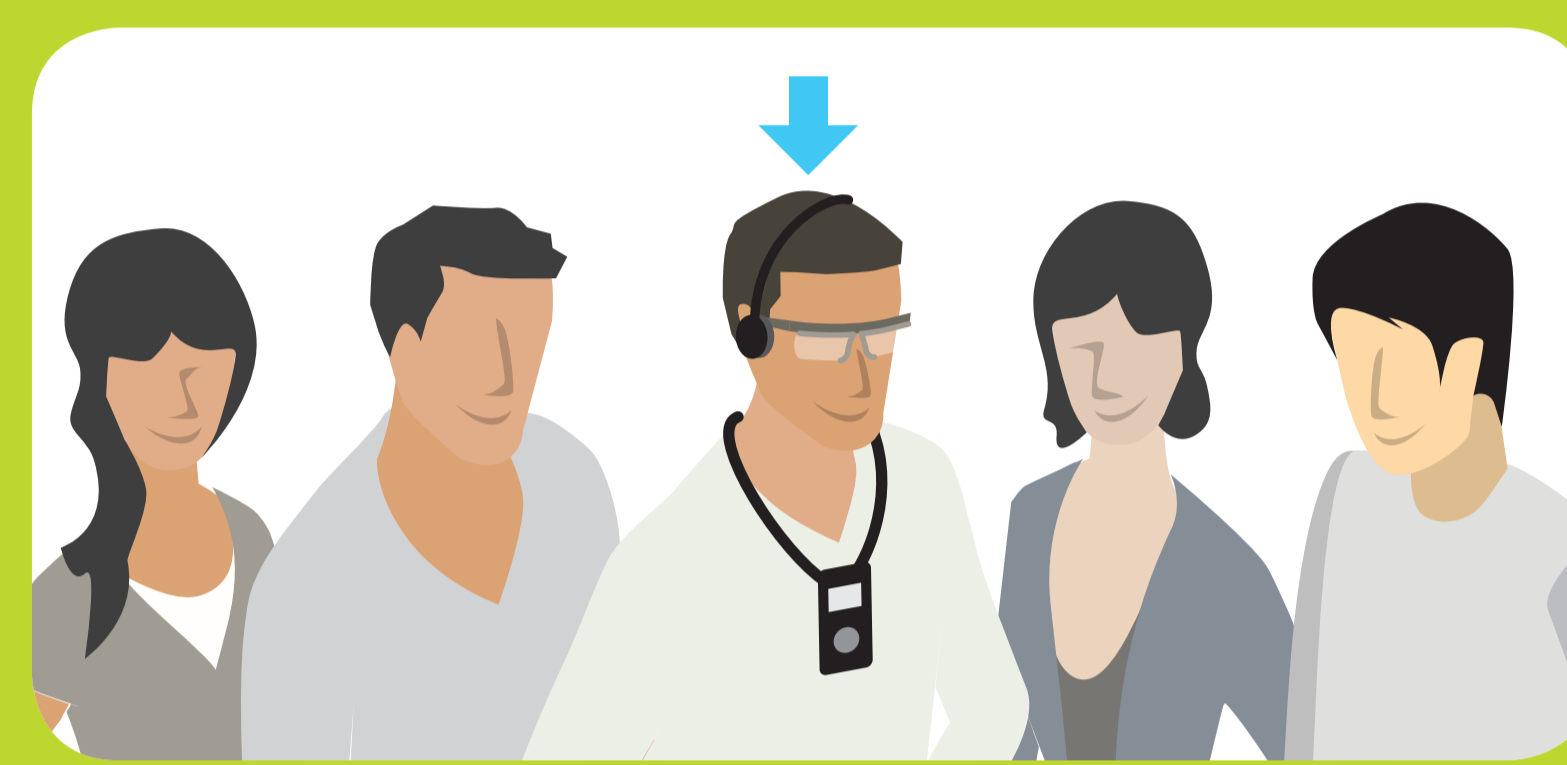
[www.listentech.com](http://www.listentech.com)



## Hearing Loss and Quality of Life



One in 5 Singaporeans will suffer from hearing loss by 2030.



Hearing Enhancement in a Performance Space enables everyone to enjoy the same performance.



Hearing loss is the "invisible disability". A simple public interaction becomes a frustrating and isolating experience.



The BCA Code of Accessibility requires Hearing Enhancement at Information Counters.



A building evacuation can be a frightening experience if you do not understand what is happening.

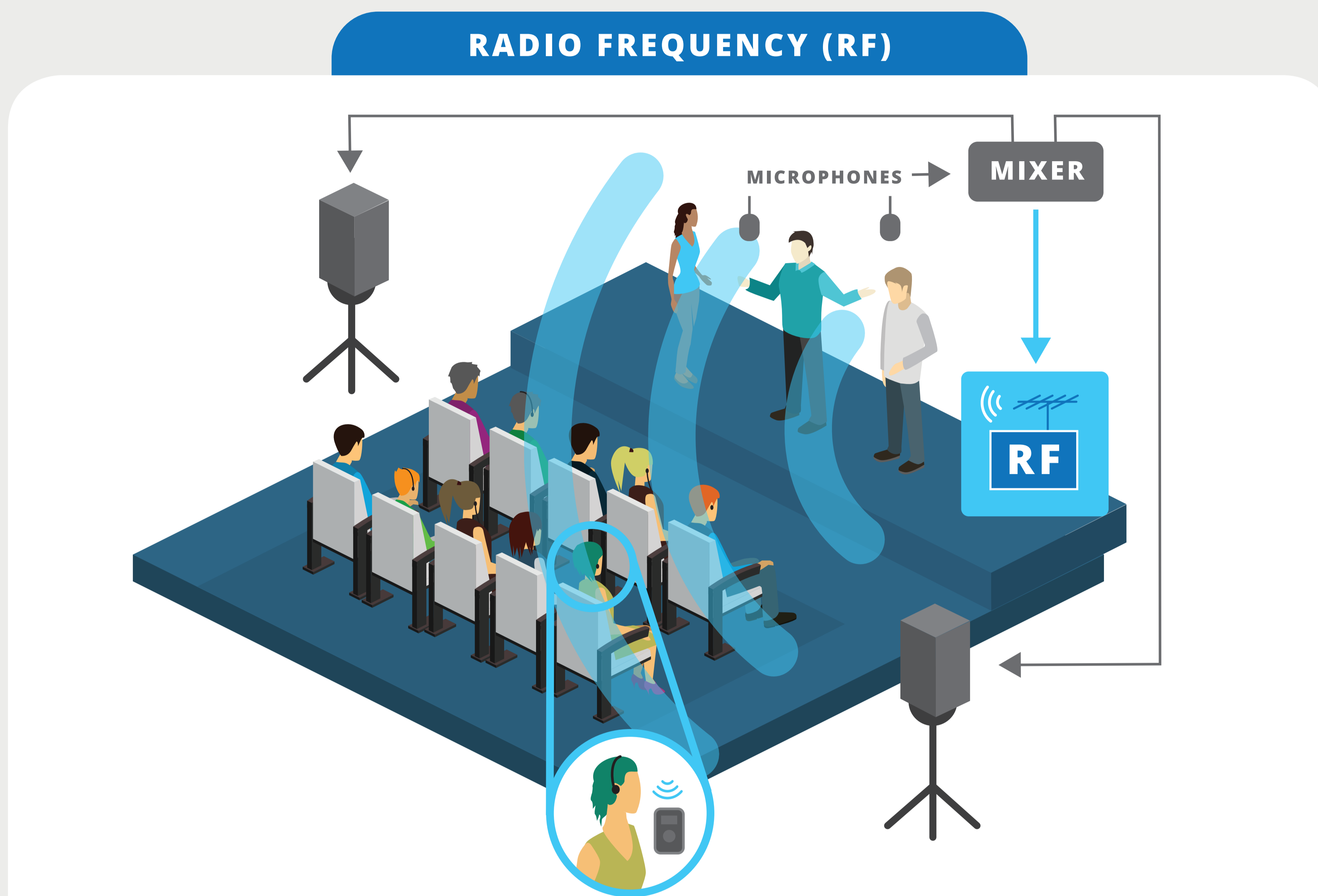


When a Hearing Enhancement system is connected to the public address system, evacuation instructions are clearly understood by those with hearing loss.

[www.listentech.com](http://www.listentech.com)



## Hearing Enhancement Solutions

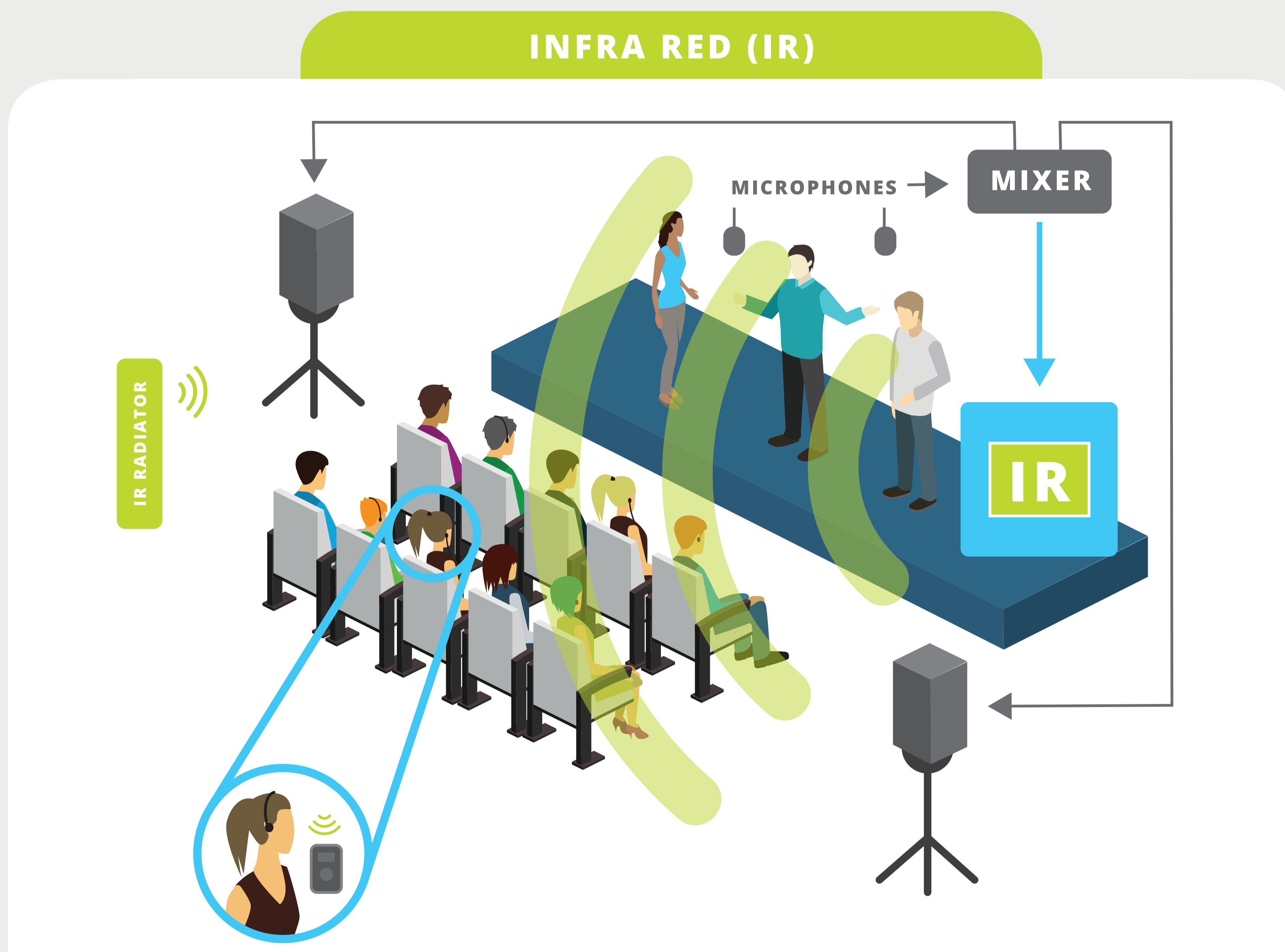


### Radio Frequency (RF) Solution

Simple setup and integration with existing AV or PA system, and multiple channels for language interpretation

RF	1	2	3	4	5
Relative Cost	[Progressive bar]				○
Effective Coverage	[Progressive bar]				○
Hearing Aid Compatible	[Progressive bar]		○	[Progressive bar]	
Room-to-Room Leakage/ Security	[Progressive bar]		○	[Progressive bar]	
*IDA (RF) Compliance	[Progressive bar]		○	[Progressive bar]	
Installation/Integration (Ease of Set-up)	[Progressive bar]			○	[Progressive bar]

\*The standard FCC 72MHz and 216MHz bands used for Hearing Enhancement are not IDA compliant in Singapore. Only Hearing Enhancement products operating in the 1.9GHz (DECT) and 2.4GHz (ISM) bands are IDA compliant.



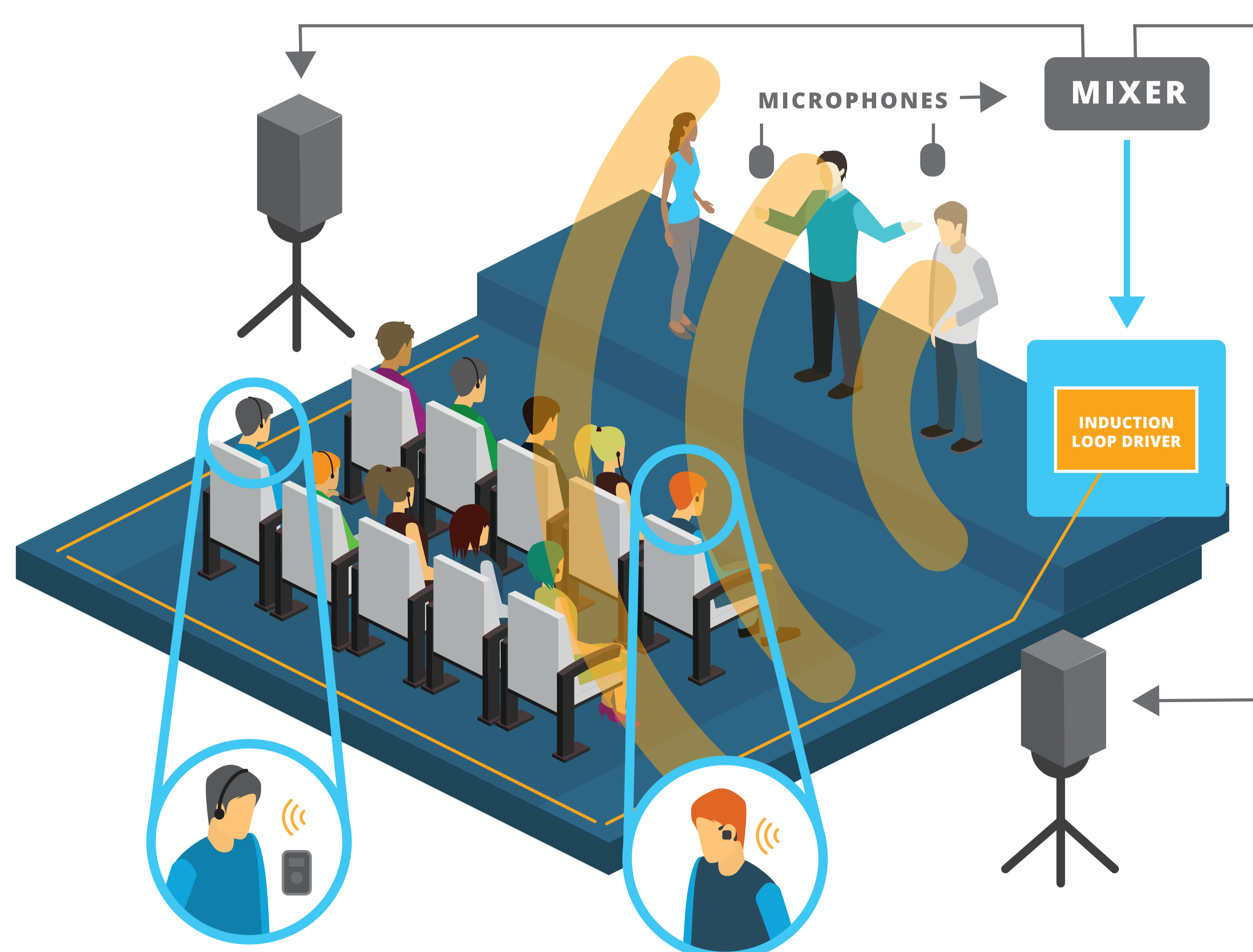
### InfraRed (IR) Solution

Infrared light cannot travel through walls and is perfect for secure audio transmission

IR	1	2	3	4	5
Relative Cost	[Progressive bar]		○	[Progressive bar]	
Effective Coverage	[Progressive bar]			○	[Progressive bar]
Hearing Aid Compatible	[Progressive bar]		○	[Progressive bar]	
Room-to-Room Leakage/ Security	[Progressive bar]				○
*IDA (RF) Compliance	[Progressive bar]				○
Installation/Integration (Ease of Set-up)	[Progressive bar]		○	[Progressive bar]	

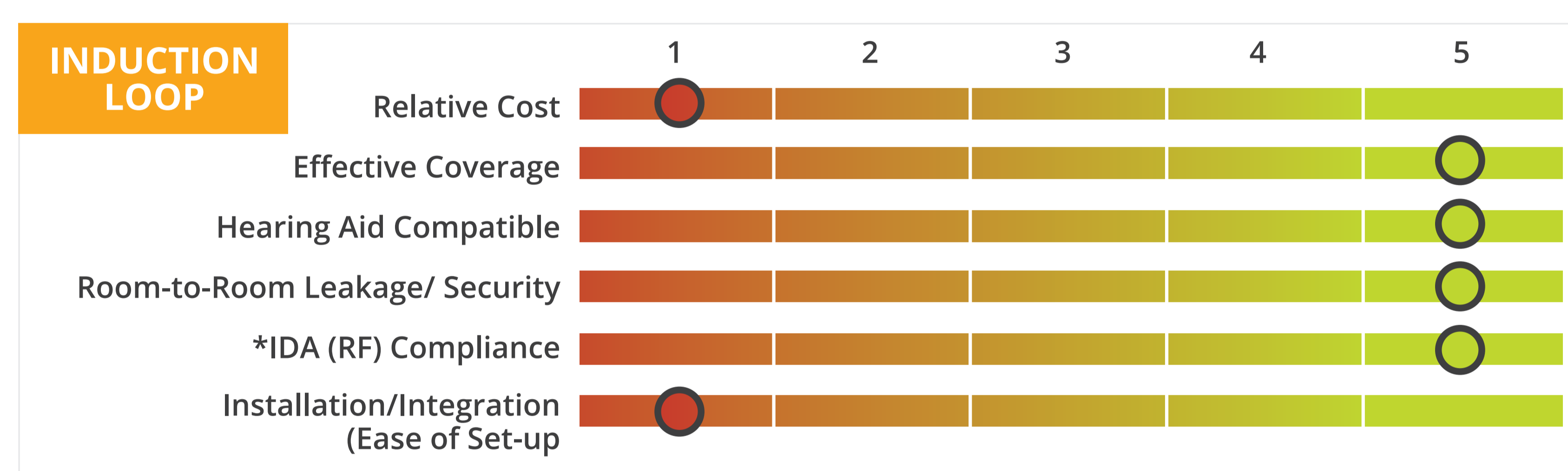
## Hearing Enhancement Solutions

### INDUCTION LOOP

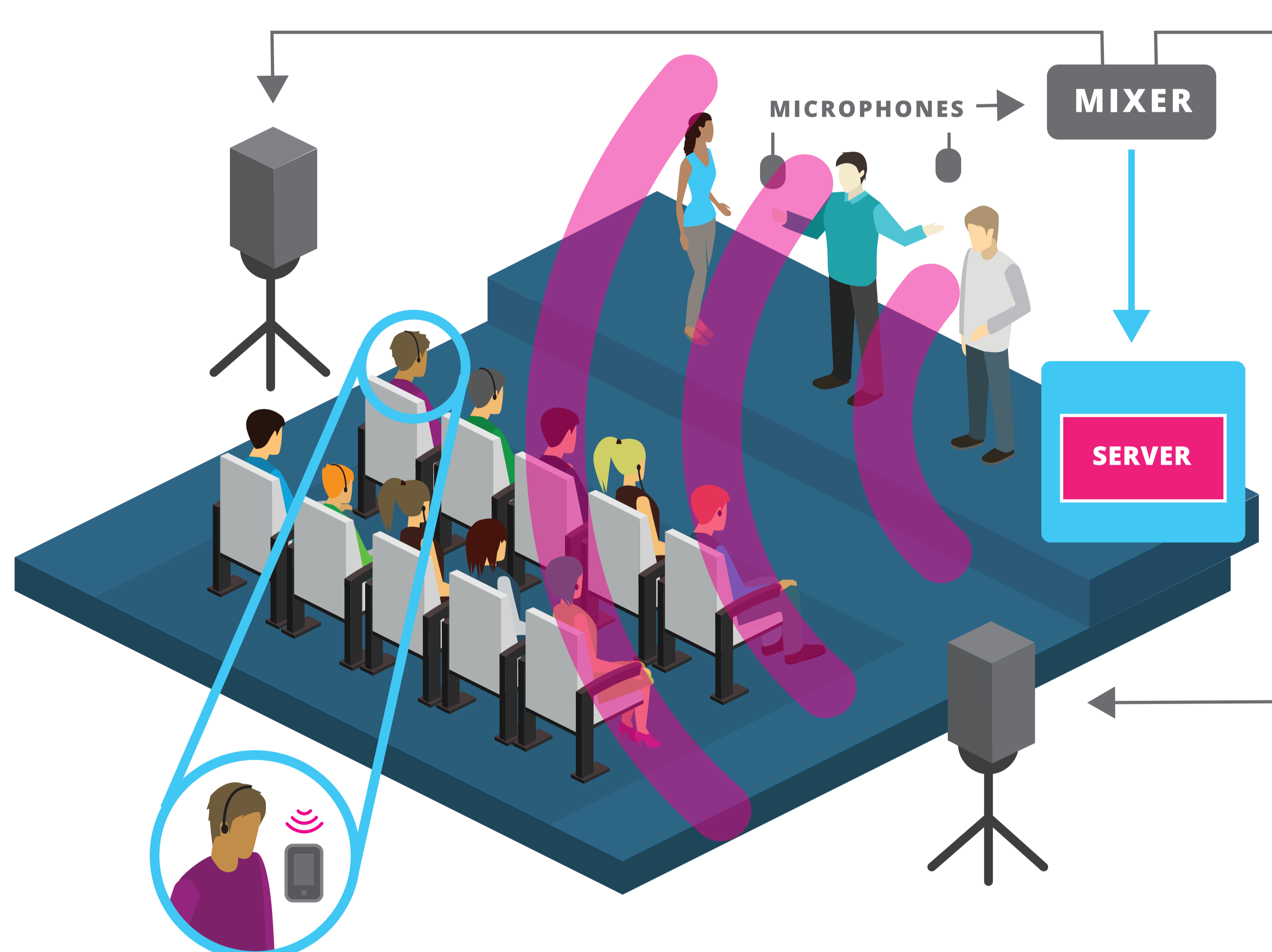


#### Induction Loop Solution

Preferred by those with hearing loss because it is discreet and works directly with hearing aids



### WI-FI SOLUTION



#### Wi-Fi Solution

Guests use their own smartphone and earbuds

